

STEPHEN CIMINI

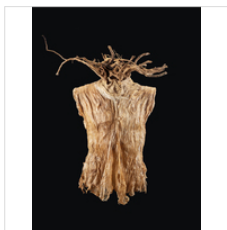
Tranquility, 2022

Oil paint, old wax and marble dust on canvas

32 × 55 × 2 in

81.3 × 139.7 × 5.1 cm

\$4,200



FRANCES VYE WILSON

Medusa, 2020

Cambium fiber from Asian mulberry tree, root

35 × 26 × 20 in

88.9 × 66 × 50.8 cm

\$5,300



FRANCES VYE WILSON

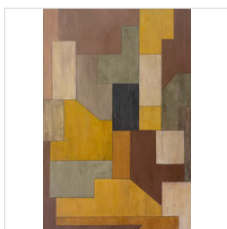
Symbiotic Systems III, 2018

Cambium fiber from Asian mulberry tree, metallic pigment, feather, branch

48 × 42 × 19 in

121.9 × 106.7 × 48.3 cm

\$3,400



STEPHEN CIMINI

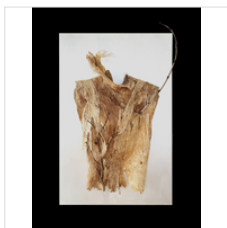
Mustard Seed, 2022

Oil paint, cold wax and marble dust on canvas

55 × 36 × 2 in

139.7 × 91.4 × 5.1 cm

\$4,300



FRANCES VYE WILSON

Strength, 2016

Cambium fiber from Asian mulberry tree and sea grape mounted to canvas

40 × 20 × 17 in

101.6 × 50.8 × 43.2 cm

\$4,200



STEPHEN CIMINI
Gone Gaudy, 2022
Oil paint, cold wax, marble dust and gold leaf on canvas

34 × 34 × 2 in
86.4 × 86.4 × 5.1 cm

\$3,200



STEPHEN CIMINI
Watching Paint Dry, 2022
Oil paint, cold wax and marble dust on canvas

34 × 34 × 2 in
86.4 × 86.4 × 5.1 cm

\$3,200



FRANCES VYE WILSON
SPEAK UP, 2017
Cambium fiber from Asian mulberry tree, branch

37 × 24 × 10 in
94 × 61 × 25.4 cm

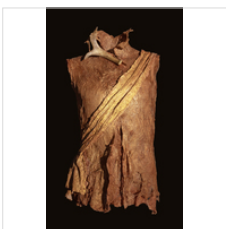
\$4,800



FRANCES VYE WILSON
Symbiotic Systems IV, 2022
Cambium fiber from Asian mulberry tree, branch, natural plant dyes, encaustic

48 × 42 × 19 in
121.9 × 106.7 × 48.3 cm

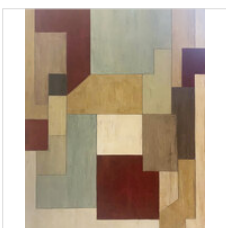
\$3,400



FRANCES VYE WILSON
DEFEND YOUR HONOR, 2017
Cambium fiber from Asian mulberry tree, metallic pigment, deer antler

28 × 15 × 8 in
71.1 × 38.1 × 20.3 cm

\$4,800



STEPHEN CIMINI
Cherry Pie, 2022
Oil paint, old wax and marble dust on canvas

40 × 32 × 2 in
101.6 × 81.3 × 5.1 cm

\$3,500



STEPHEN CIMINI

Tuxedo, 2022

Oil paint, old wax and marble dust on canvas

40 × 32 × 2 in

101.6 × 81.3 × 5.1 cm

\$3,500



FRANCES VYE WILSON

GATHER YOUR STRENGTH, 2018

Cambium fiber from Asian mulberry tree, citrine stone

29 × 16 × 12 in

73.7 × 40.6 × 30.5 cm

\$4,800



FRANCES VYE WILSON

STAND YOUR GROUND, 2017

Cambium fiber from Asian mulberry tree, branch

26 × 17 × 8 in

66 × 43.2 × 20.3 cm

\$4,200

Vintage Collections: Watercolors, Etchings, and Drawings

Sep 8, 2022 - Oct 5, 2022 · #534, 548 W 28th St, New York, US

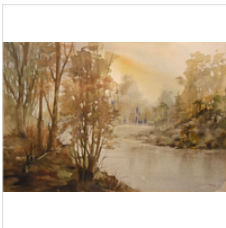


FRANK MASSA

House on the Hill, ca. 1970
Watercolor on Paper

16 × 22 in
40.6 × 55.9 cm

\$725

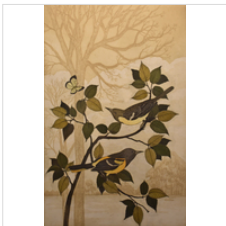


FRANK MASSA

Misty Forest 3, ca. 1970
Watercolor on Paper

16 × 22 in
40.6 × 55.9 cm

\$600

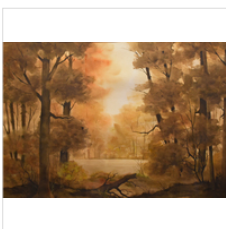


FRANK MASSA

Orials, 1982
Etching and Aquatint

24 × 18 in
61 × 45.7 cm
Edition 1/50

\$750

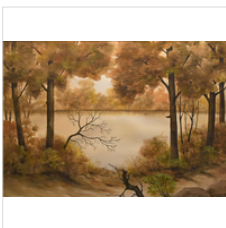


FRANK MASSA

Misty Forest 2, ca. 1970
Watercolor on Paper

18 3/4 × 27 in
47.6 × 68.6 cm

\$700



FRANK MASSA

Misty Forest 1, ca. 1970
Watercolor on Paper

18 3/4 × 27 in
47.6 × 68.6 cm

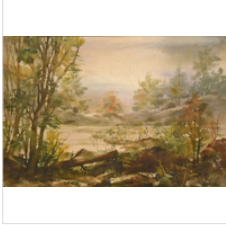
\$700



FRANK MASSA
Jungle Tiger, 1982
Etching and Aquatint

24 × 18 in
61 × 45.7 cm
Edition AP/50 + 1AP

\$750



FRANK MASSA
Misty Forest 4, ca. 1970
Watercolor on Paper

14 1/2 × 22 in
36.8 × 55.9 cm

\$600



JUDITH LAYNE SARAMA
Fish Fun, ca. 1980
Pencil on Paper

23 × 29 in
58.4 × 73.7 cm

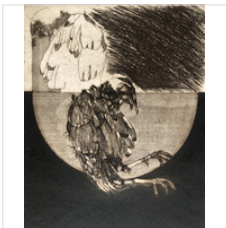
\$750



CAROL MASSA
Deco, 1972
Etching and Aquatint

4 × 3 in
10.2 × 7.6 cm
Edition AP

\$175



CAROL MASSA
Elysium, 1976
Etching and Aquatint

9 × 5 in
22.9 × 12.7 cm
Edition 8/15

\$550



CAROL MASSA
Night Flight, 1975
Etching and Aquatint

6 1/2 × 3 3/4 in
16.5 × 9.5 cm
Edition AP

\$425



JUDITH LAYNE SARAMA
Monkey Skull, 1972
Etching

7 1/2 × 7 in
19.1 × 17.8 cm
Edition AP + 1AP

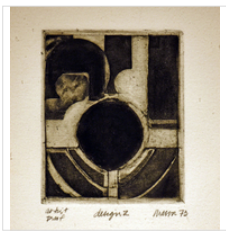
\$525



CAROL MASSA
Owl Study, 1975
Etching

2 × 5 1/4 in
5.1 × 13.3 cm
Edition 12/75

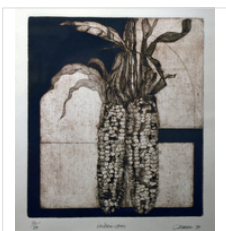
\$250



CAROL MASSA
Design 2, 1973
Etching and Aquatint

3 1/2 × 3 in
8.9 × 7.6 cm
Edition AP + 1AP

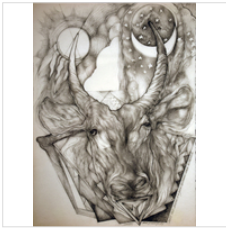
\$225



CAROL MASSA
Indian Corn, 1975
Etching and Aquatint

8 3/4 × 7 3/4 in
22.2 × 19.7 cm
Edition 20/100

\$550



JUDITH LAYNE SARAMA
Shaggy and Powerful, ca. 1980
Pencil on Paper

15 × 11 in
38.1 × 27.9 cm

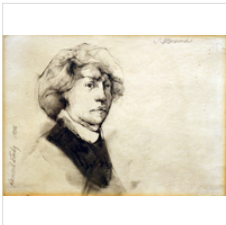
\$525



JUDITH LAYNE SARAMA
Imperial Pink, ca. 1980
Pencil on Paper

11 × 14 in
27.9 × 35.6 cm

\$525



CAROL MASSA
Pencil Study, 1972
Pencil on Paper

5 × 7 in
12.7 × 17.8 cm

\$250



JUDITH LAYNE SARAMA
Fool to Cry, ca. 1980
Pencil on Paper

14 × 11 in
35.6 × 27.9 cm

\$525

CARTER BURDEN GALLERY

On the Wall: Tree of Life

Sep 8, 2022 - Oct 5, 2022 · #534, 548 W 28th St, New York, US



AZITA GHAFOURI

Tree of Life, 2022

Acrylic on Paper

44 × 143 in

111.8 × 363.2 cm

\$4,800

\$800 each